

Ceiling-mounted profiles Specification

**AS-NNR25VCC1-1000**

**AS-NNR25VCC1-2500**

**AS-NNR25VCC1-XX-2**

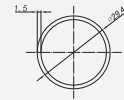
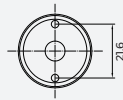
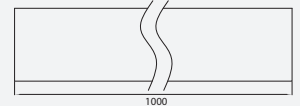
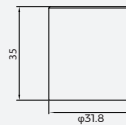
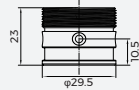
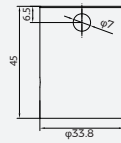
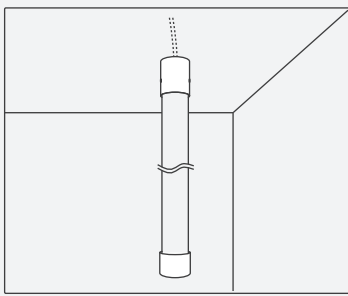


## 【Features】

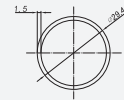
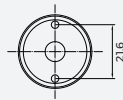
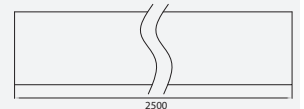
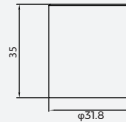
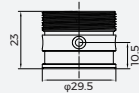
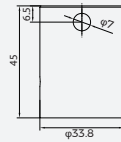
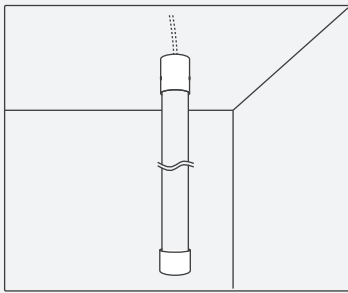
- **Material:** aluminum;
- **Operating environment:** indoor;
- **Installation:** screw flat mounting;
- **Warranty:** 6 years.

## 【Mechanical Parameter】

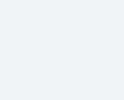
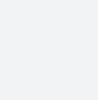
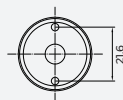
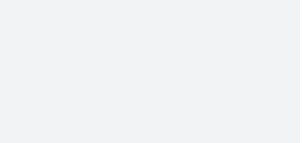
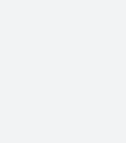
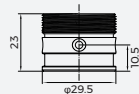
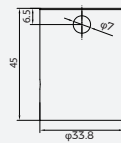
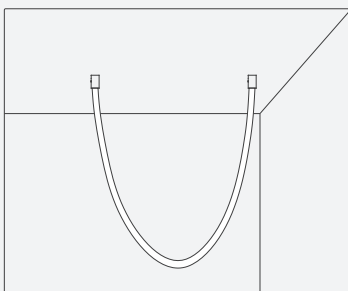
### AS-NNR25VCC1-1000



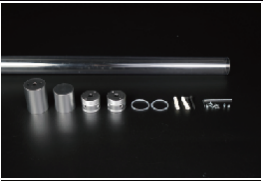


### AS-NNR25VCC1-2500



### AS-NNR25VCC1-XX-2



## 【Specification information】

Describe	Accessories Picture	Order model	Quantity/ case (PCS)	Net weight (kg)	Per box net weight (kg)	Gross weight (kg)	Packages (mm)	Range of applications
Single-ended vertical ceiling Install accessory kit (1m)		AS-NNR25VCC1-1000	16	0.23	3.63	4.52	1285*160*160	suit to:NNR25/NNR25P
Single-ended vertical ceiling Install accessory kit (2.5m)		AS-NNR25VCC1-2500	16	0.47	7.57	9.29	2580*165*165	suit to:NNR25/NNR25P
Double-ended vertical ceiling Kits		AS-NNR25VCC1-XX-2	48	0.13	6.05	6.65	365*365*190	suit to:NNR25/NNR25P

## 【Precautions】

- Do not use any acid or alkaline adhesive to fix products(including not limited to glass cement,etc).
- After the installation of the lamps and lanterns is completed, do not pull violently, to avoid damage to the lamp.
- Maximum lifting weight of accessories is 4kg(No more than 4 meters).
- Welding of wires and plate must be done in a dry environment.